

Wai'anae Artificial Reef, O'ahu

A4

158°12'W

158°11'W

21°26'N

21°26'N

21°25'N

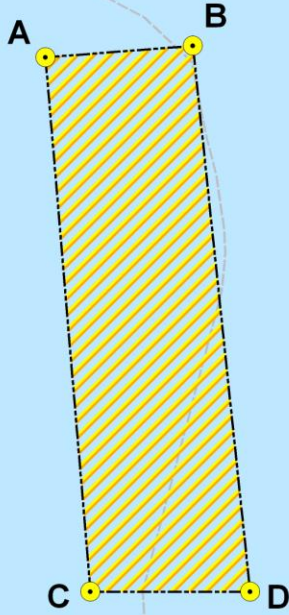
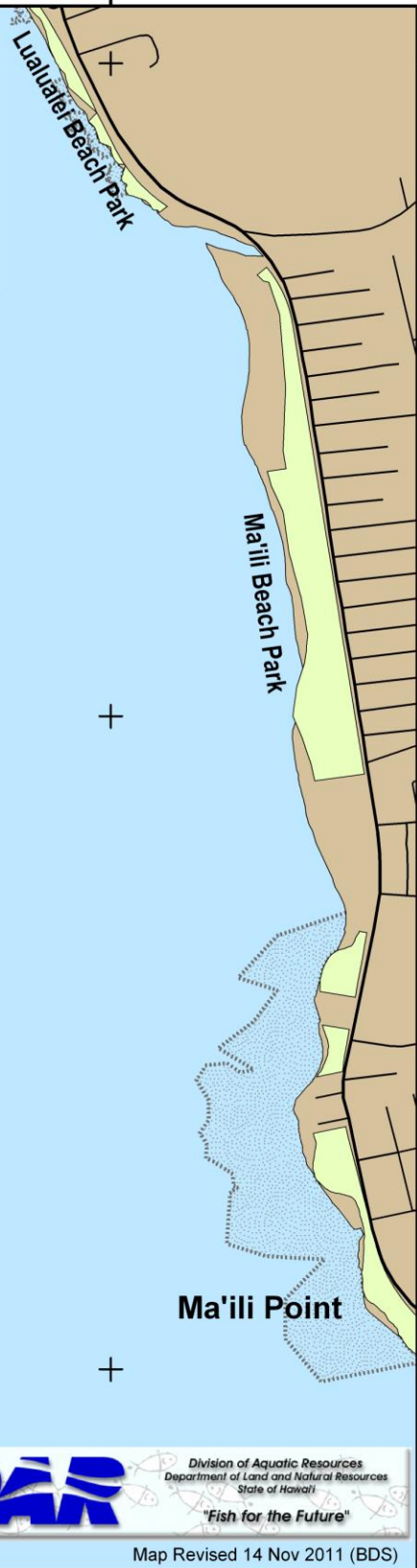
21°25'N

21°24'N

21°24'N

Boundary Coordinates of the Wai'anae Artificial Reef				
Coordinate	North		Depth*	
	Latitude	Longitude	Feet	Meters
A	21° 25.393'	158° 11.801'	104	32
B	21° 25.410'	158° 11.585'	68	21
C	21° 24.610'	158° 11.735'	99	30
D	21° 24.610'	158° 11.501'	43	13

*Source: Depths estimated from SHOALS LiDAR bathymetry (USACE)



Legend

Depth (feet)

- 60
- - - 300

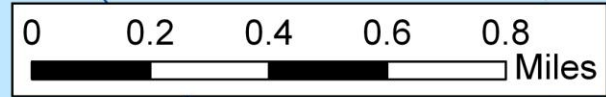
● Boundary Coordinates

▨ Wai'anae Art. Reef

— Streets

■ Parks

▤ Reef & Tidepool Areas



Division of Aquatic Resources
Department of Land and Natural Resources
State of Hawaii

"Fish for the Future"

Map Revised 14 Nov 2011 (BDS)

158°12'W

158°11'W

Keawakapu Artificial Reef, Maui

A5

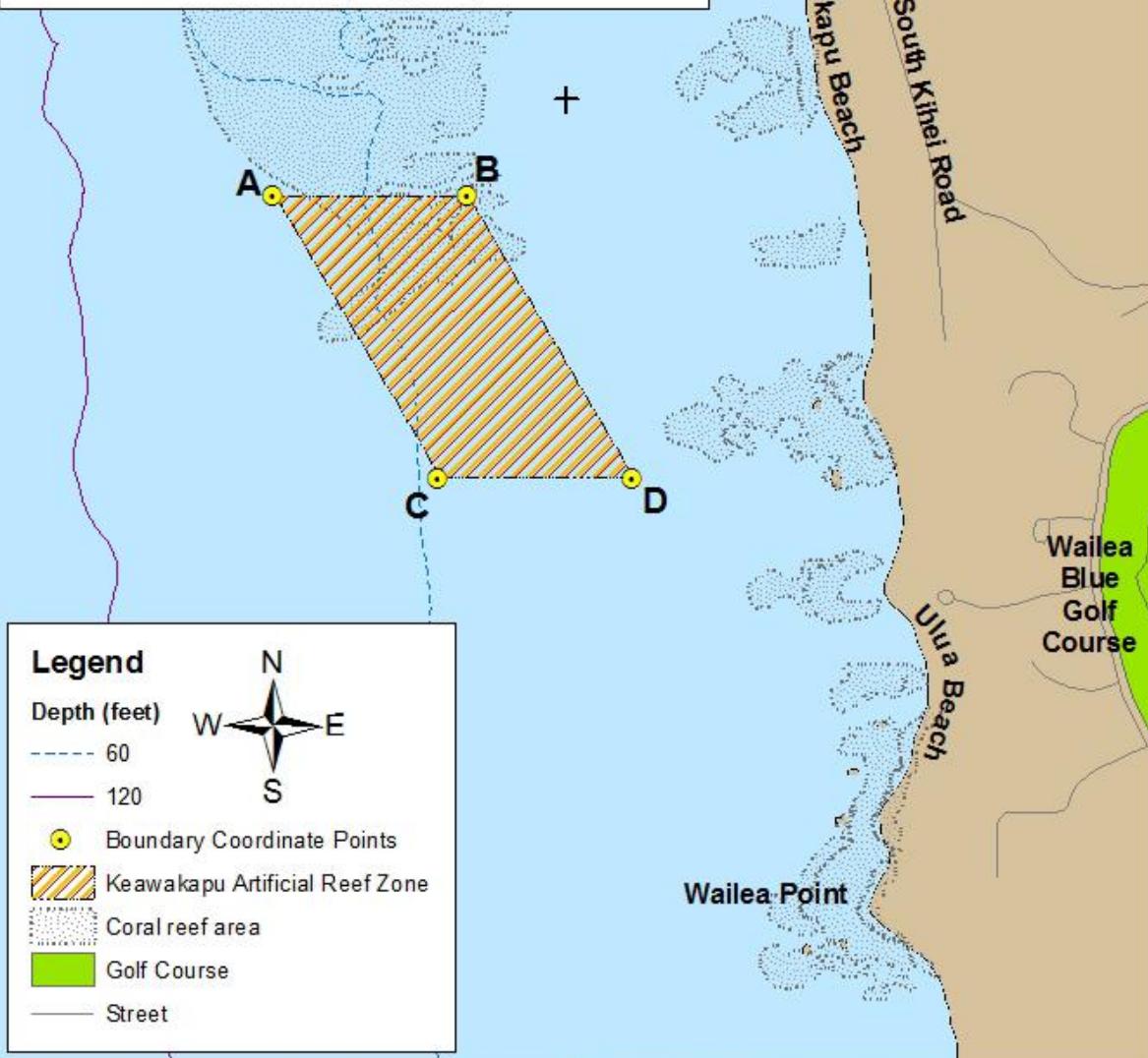
156°27'W

Boundary Coordinates of the Keawakapu Artificial Reef				
Coordinate	North	West	Depth*	
	Latitude	Longitude	Feet	Meters
A	20° 41.900'	156° 27.300'	72	22
B	20° 41.900'	156° 27.100'	46	14
C	20° 41.610'	156° 27.130'	57	17
D	20° 41.610'	156° 26.930'	52	16

*Depths are approximate and should not be used for navigational purposes. Depths of Coordinates A, B & C were estimated from bathymetry data aggregated from NOAA-NOS Hydrographic Survey Data CD (Version 4.1, Vols. 1 & 2) by the Hawaii State GIS Program. Depth of Coordinates D was estimated from SHOALS LiDAR bathymetry (USACE).

20°42'N

20°42'N



Legend

Depth (feet)

- 60
- 120

● Boundary Coordinate Points

▨ Keawakapu Artificial Reef Zone

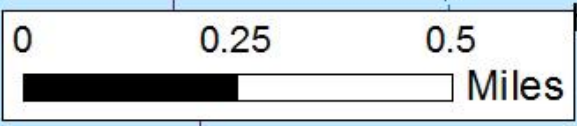
⋯ Coral reef area

■ Golf Course

— Street

20°41'N

20°41'N

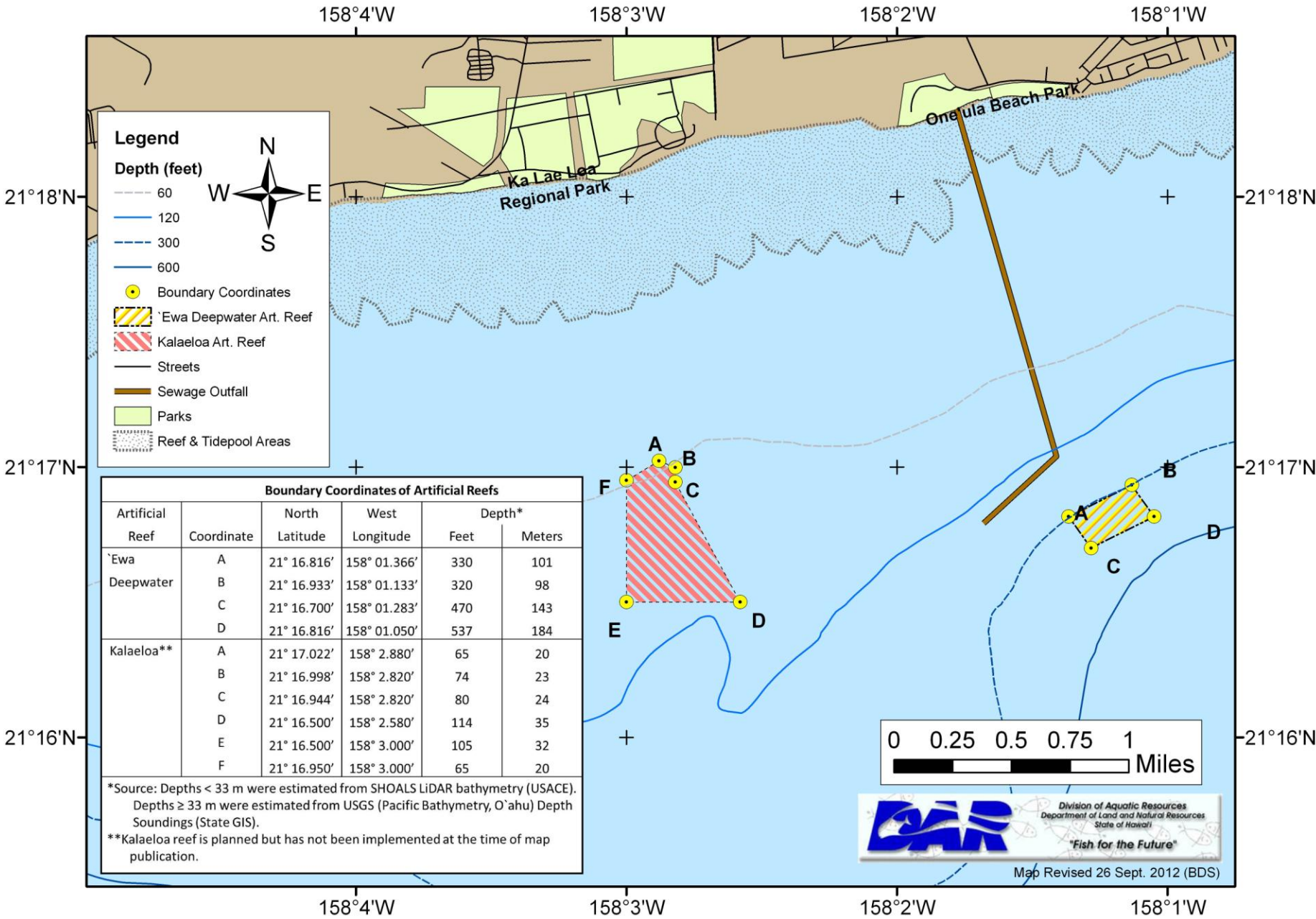


Division of Aquatic Resources
Department of Land and Natural Resources
State of Hawaii
'Fish for the Future'

Map Revised 22 April 2013 (BDS)

156°27'W

'Ewa Deepwater & Kalaeloa Artificial Reefs, O'ahu A3



Legend

Depth (feet)

- 60
- 120
- 300
- 600

● Boundary Coordinates

▨ 'Ewa Deepwater Art. Reef

▨ Kalaeloa Art. Reef

— Streets

— Sewage Outfall

■ Parks

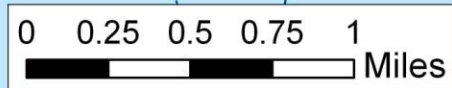
▨ Reef & Tidepool Areas

Boundary Coordinates of Artificial Reefs

Artificial Reef	Coordinate	North		Depth*	
		Latitude	Longitude	Feet	Meters
'Ewa Deepwater	A	21° 16.816'	158° 01.366'	330	101
	B	21° 16.933'	158° 01.133'	320	98
	C	21° 16.700'	158° 01.283'	470	143
	D	21° 16.816'	158° 01.050'	537	184
Kalaeloa**	A	21° 17.022'	158° 2.880'	65	20
	B	21° 16.998'	158° 2.820'	74	23
	C	21° 16.944'	158° 2.820'	80	24
	D	21° 16.500'	158° 2.580'	114	35
	E	21° 16.500'	158° 3.000'	105	32
	F	21° 16.950'	158° 3.000'	65	20

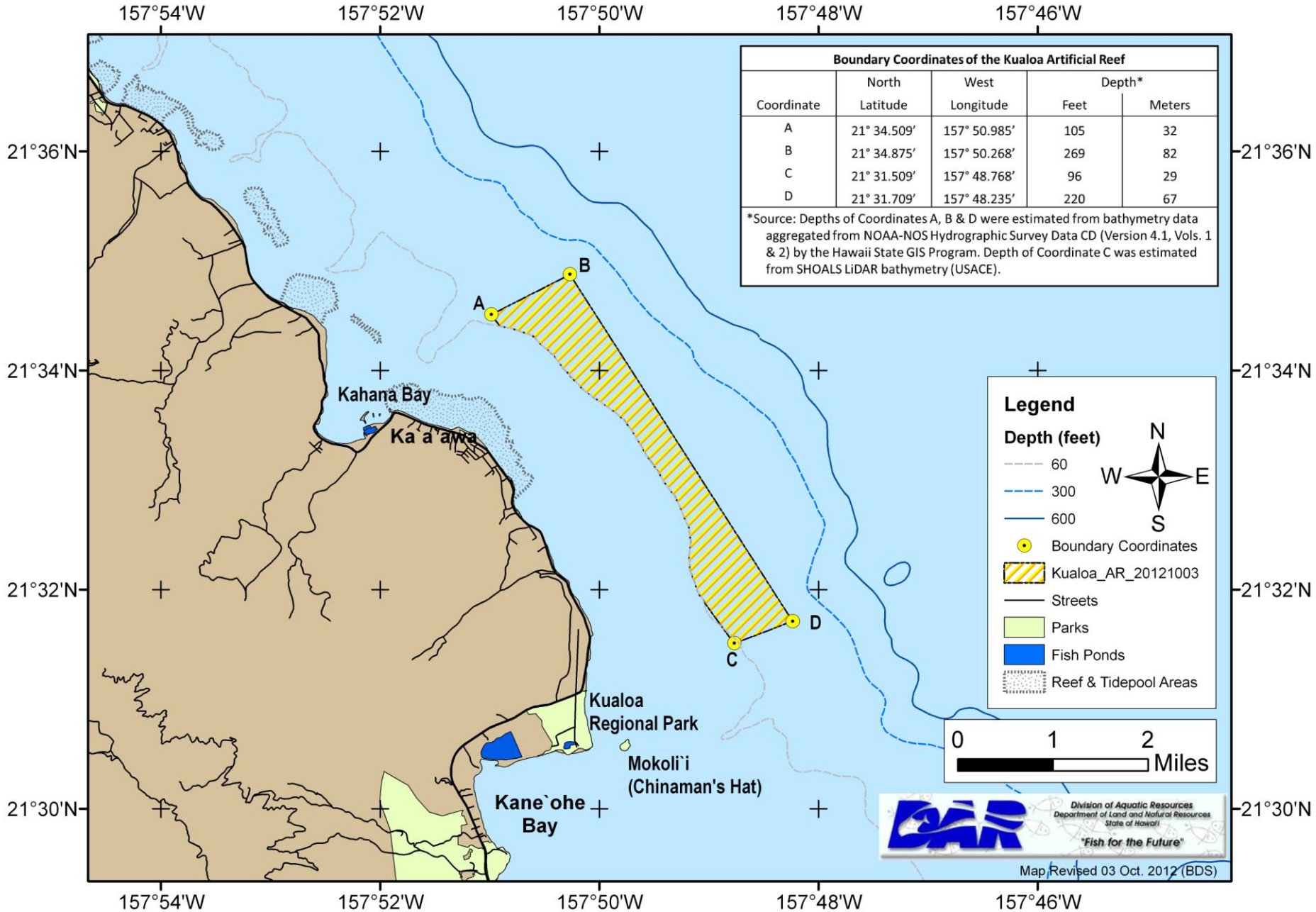
*Source: Depths < 33 m were estimated from SHOALS LiDAR bathymetry (USACE). Depths ≥ 33 m were estimated from USGS (Pacific Bathymetry, O'ahu) Depth Soundings (State GIS).

**Kalaeloa reef is planned but has not been implemented at the time of map publication.

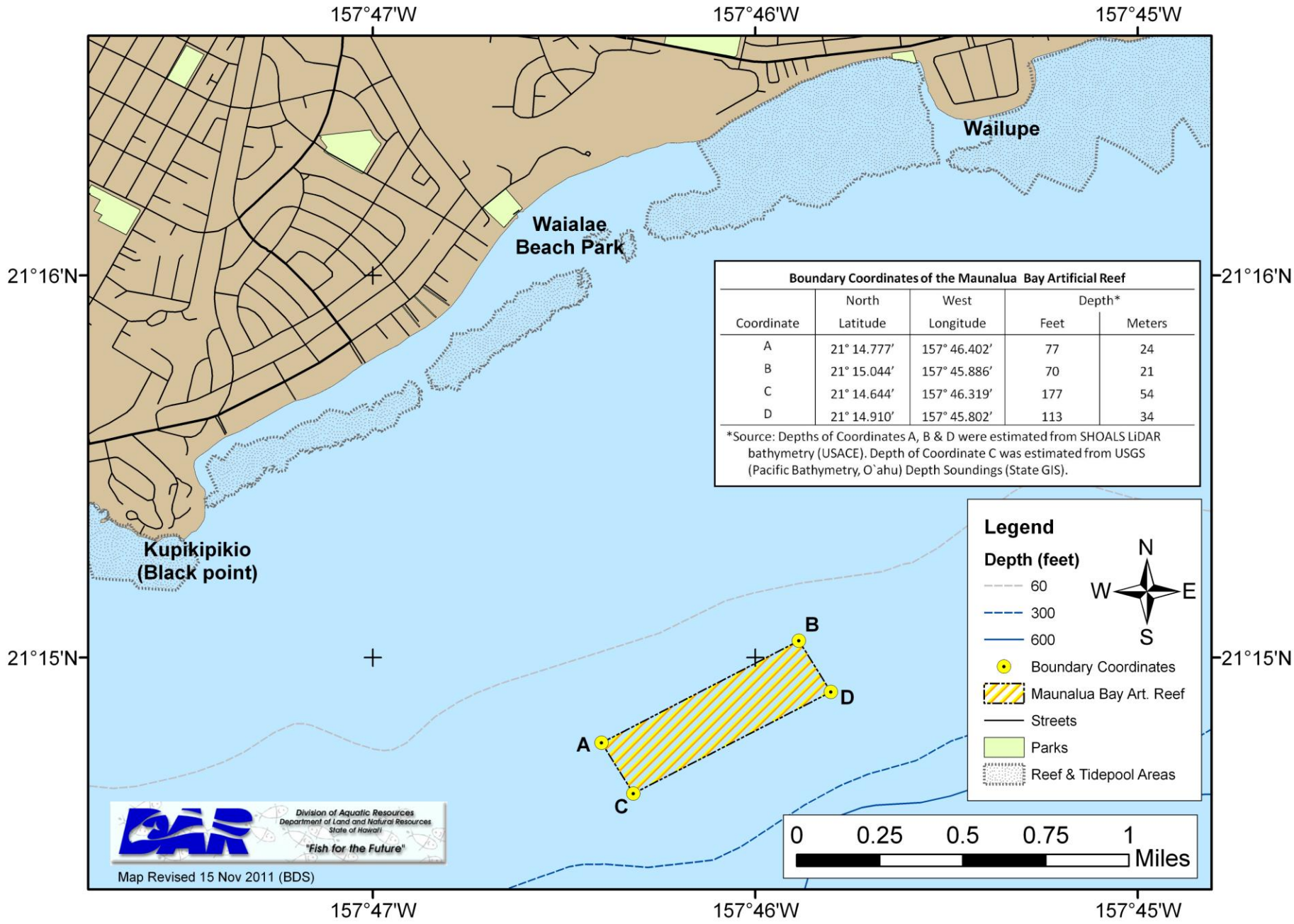


Map Revised 26 Sept. 2012 (BDS)

Kualoa Artificial Reef, O`ahu A1



Maunalua Bay Artificial Reef, O`ahu A2



Coordinate	North		Depth*	
	Latitude	Longitude	Feet	Meters
A	21° 14.777'	157° 46.402'	77	24
B	21° 15.044'	157° 45.886'	70	21
C	21° 14.644'	157° 46.319'	177	54
D	21° 14.910'	157° 45.802'	113	34

*Source: Depths of Coordinates A, B & D were estimated from SHOALS LiDAR bathymetry (USACE). Depth of Coordinate C was estimated from USGS (Pacific Bathymetry, O`ahu) Depth Soundings (State GIS).



Map Revised 15 Nov 2011 (BDS)

157°47'W

157°46'W

157°45'W

21°16'N

21°16'N

21°15'N

21°15'N