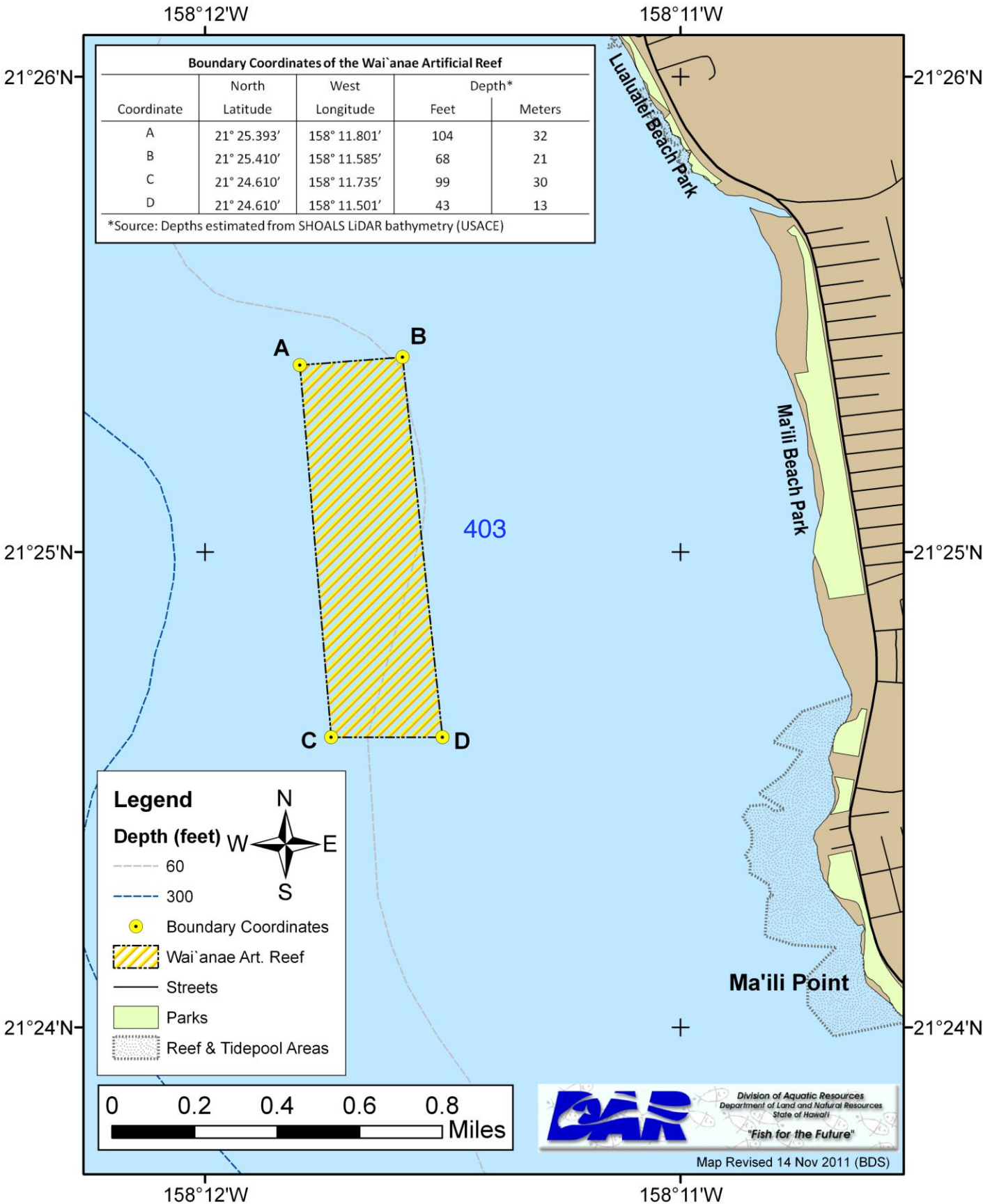


Wai'anae Artificial Reef, O'ahu

A4



Boundary Coordinates of the Wai'anae Artificial Reef				
Coordinate	North	West	Depth*	
	Latitude	Longitude	Feet	Meters
A	21° 25.393'	158° 11.801'	104	32
B	21° 25.410'	158° 11.585'	68	21
C	21° 24.610'	158° 11.735'	99	30
D	21° 24.610'	158° 11.501'	43	13

*Source: Depths estimated from SHOALS LiDAR bathymetry (USACE)

Legend

Depth (feet)

- 60
- ... 300

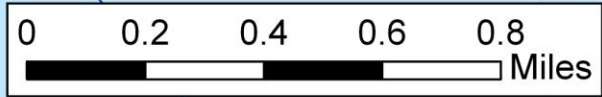
● Boundary Coordinates

▨ Wai'anae Art. Reef

— Streets

■ Parks

▤ Reef & Tidepool Areas



Division of Aquatic Resources
Department of Land and Natural Resources
State of Hawaii
"Fish for the Future"

Map Revised 14 Nov 2011 (BDS)