

# Keawakapu Artificial Reef, Maui

# A5

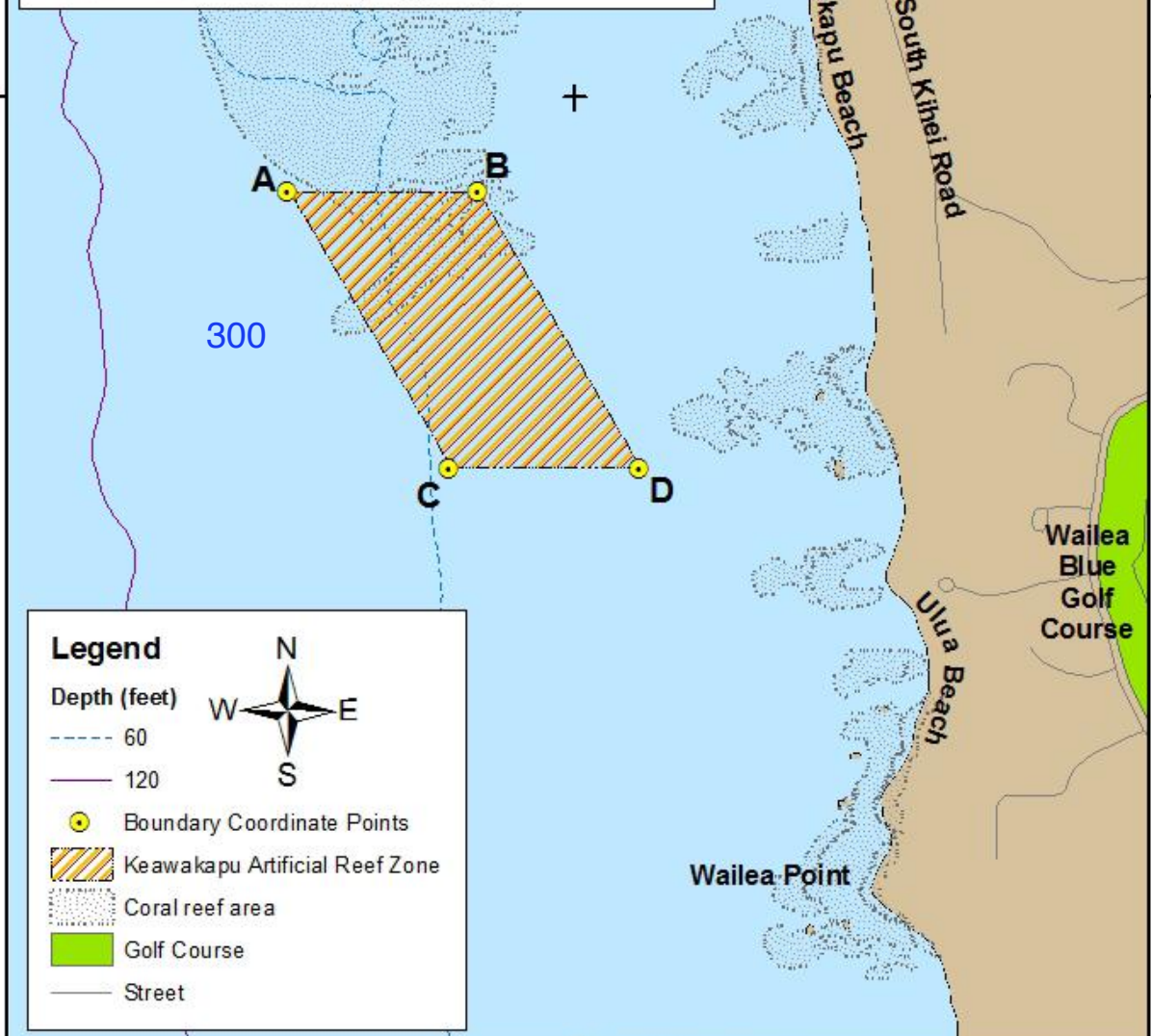
156°27'W

Boundary Coordinates of the Keawakapu Artificial Reef				
Coordinate	North	West	Depth*	
	Latitude	Longitude	Feet	Meters
A	20° 41.900'	156° 27.300'	72	22
B	20° 41.900'	156° 27.100'	46	14
C	20° 41.610'	156° 27.130'	57	17
D	20° 41.610'	156° 26.930'	52	16

\*Depths are approximate and should not be used for navigational purposes. Depths of Coordinates A, B & C were estimated from bathymetry data aggregated from NOAA-NOS Hydrographic Survey Data CD (Version 4.1, Vols. 1 & 2) by the Hawaii State GIS Program. Depth of Coordinates D was estimated from SHOALS LiDAR bathymetry (USACE).

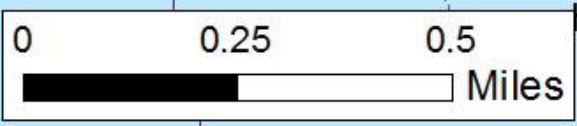
20°42'N

20°42'N



20°41'N

20°41'N



Division of Aquatic Resources  
Department of Land and Natural Resources  
State of Hawaii  
**'Fish for the Future'**

Map Revised 22 April 2013 (BDS)

156°27'W